



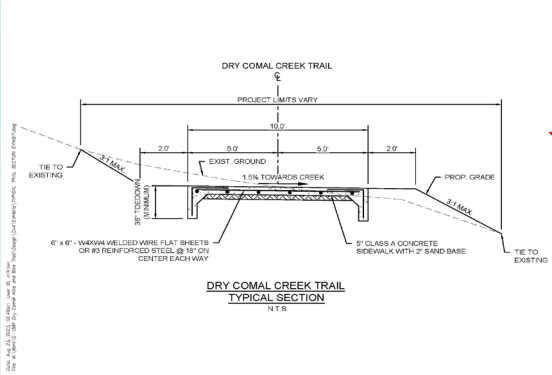
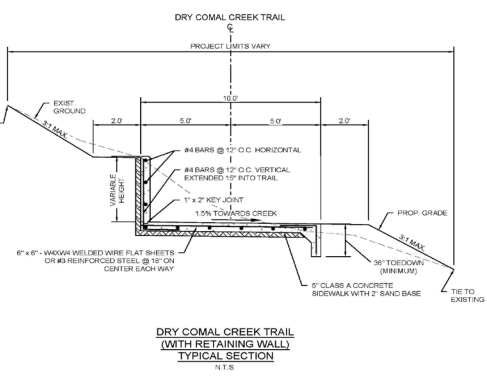
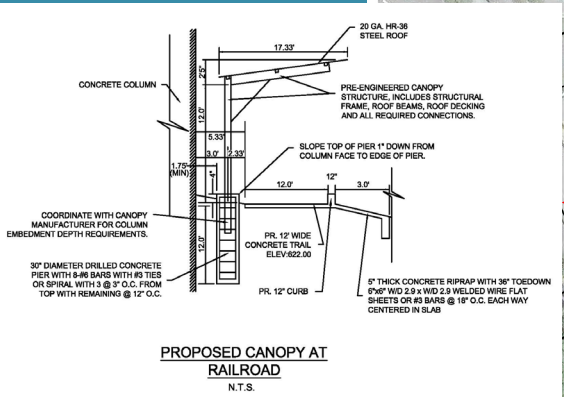
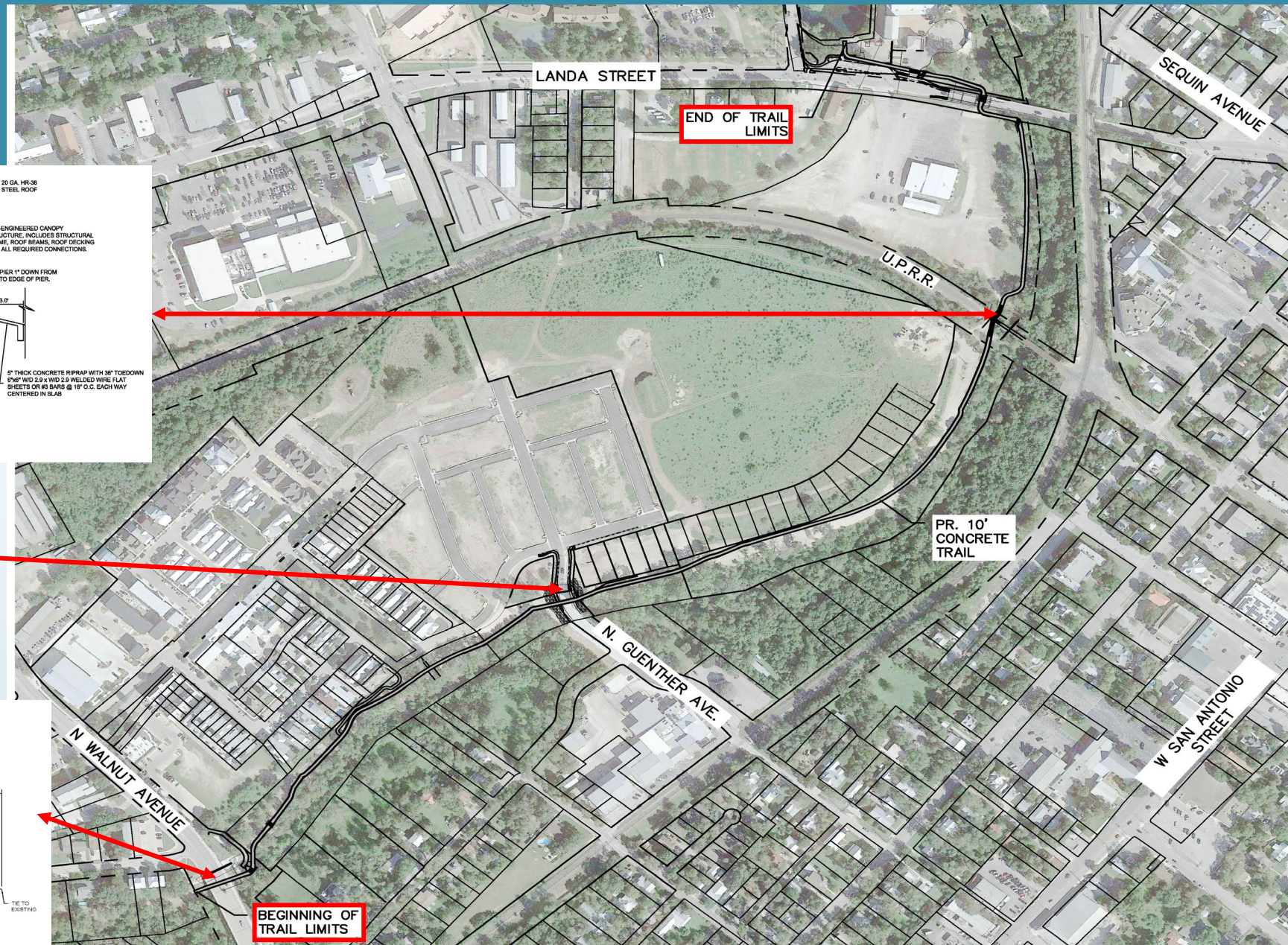
# DRY COMAL CREEK HIKE & BIKE TRAIL

Segment 1

August 24, 2023  
Open House



# TRAIL LIMITS

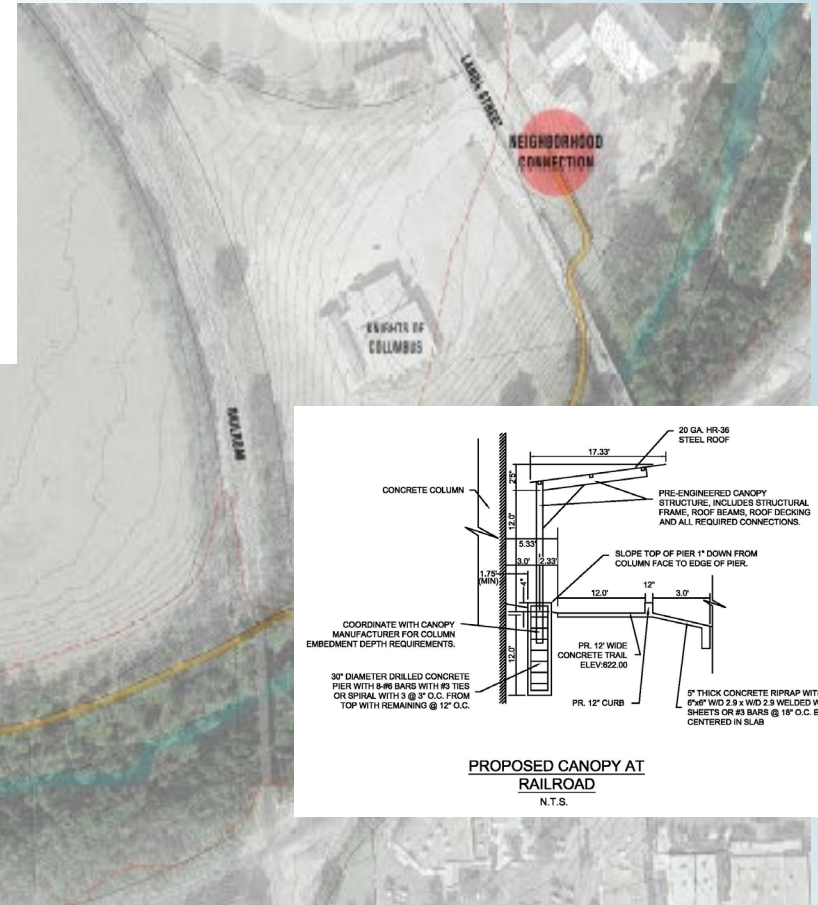
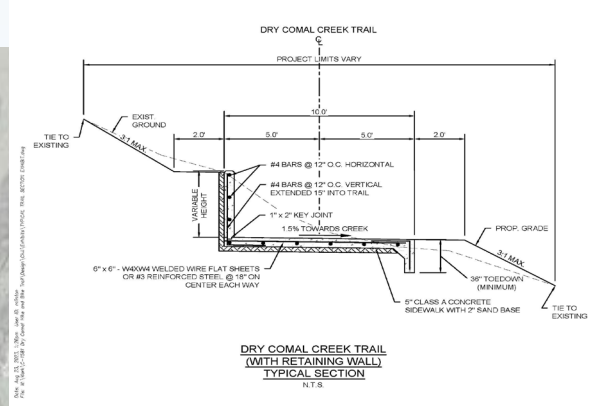
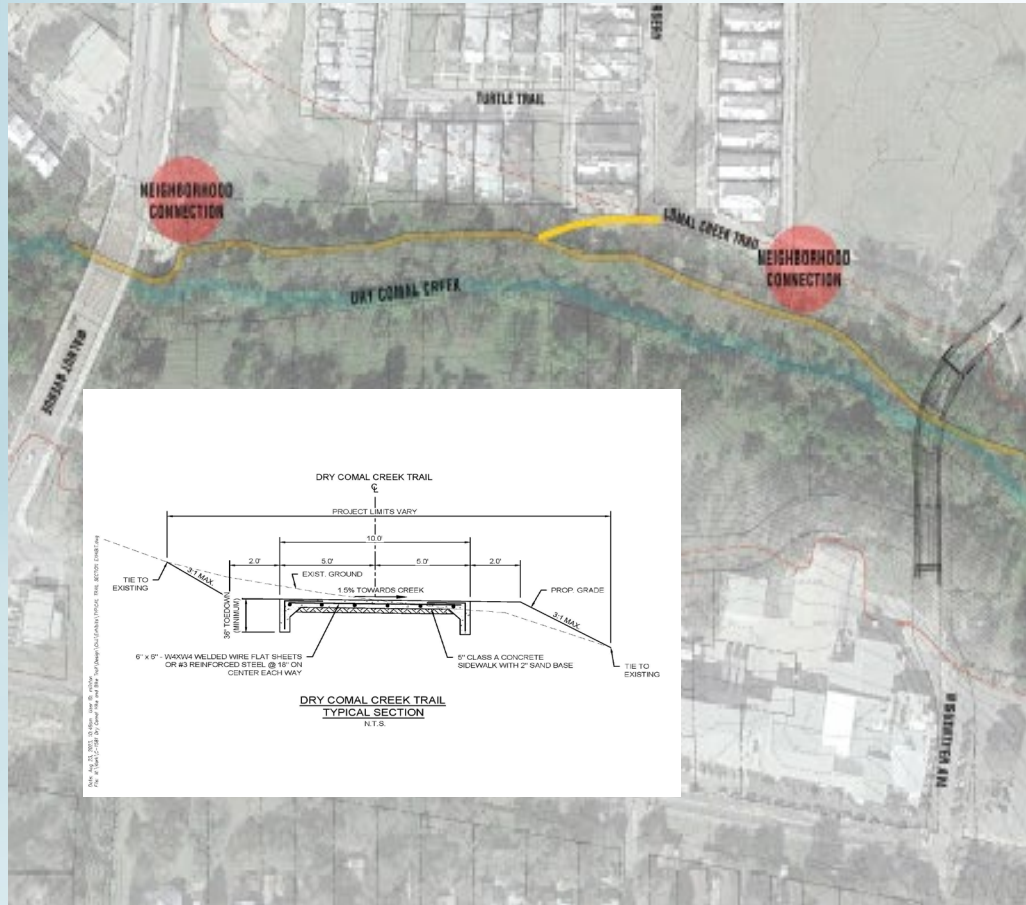




# TRAIL FACTS

- OVERALL DISTANCE = 0.91 MILE
- 10' WIDE CONCRETE TRAIL
- NEIGHBORHOOD CONNECTION AT SPRINGS NURSERY
  - 8' WIDE CONCRETE TRAIL
- WAYFINDING SIGNAGE
- POINTS OF INTEREST ALONG TRAIL
  - NODES WITH OVERLOOK

# OVERALL TRAIL LIMITS





# PROPOSED TRAIL RENDERINGS



Fig. 3.1.2 Elevated walkway at Walnut Ave. neighborhoods connection.



Fig. 3.1.5 Trail at Knights of Columbus property as it approaches Landa Street Bridge.



# PROPOSED TRAIL RENDERINGS



Fig. 3.1.4 Observation area.

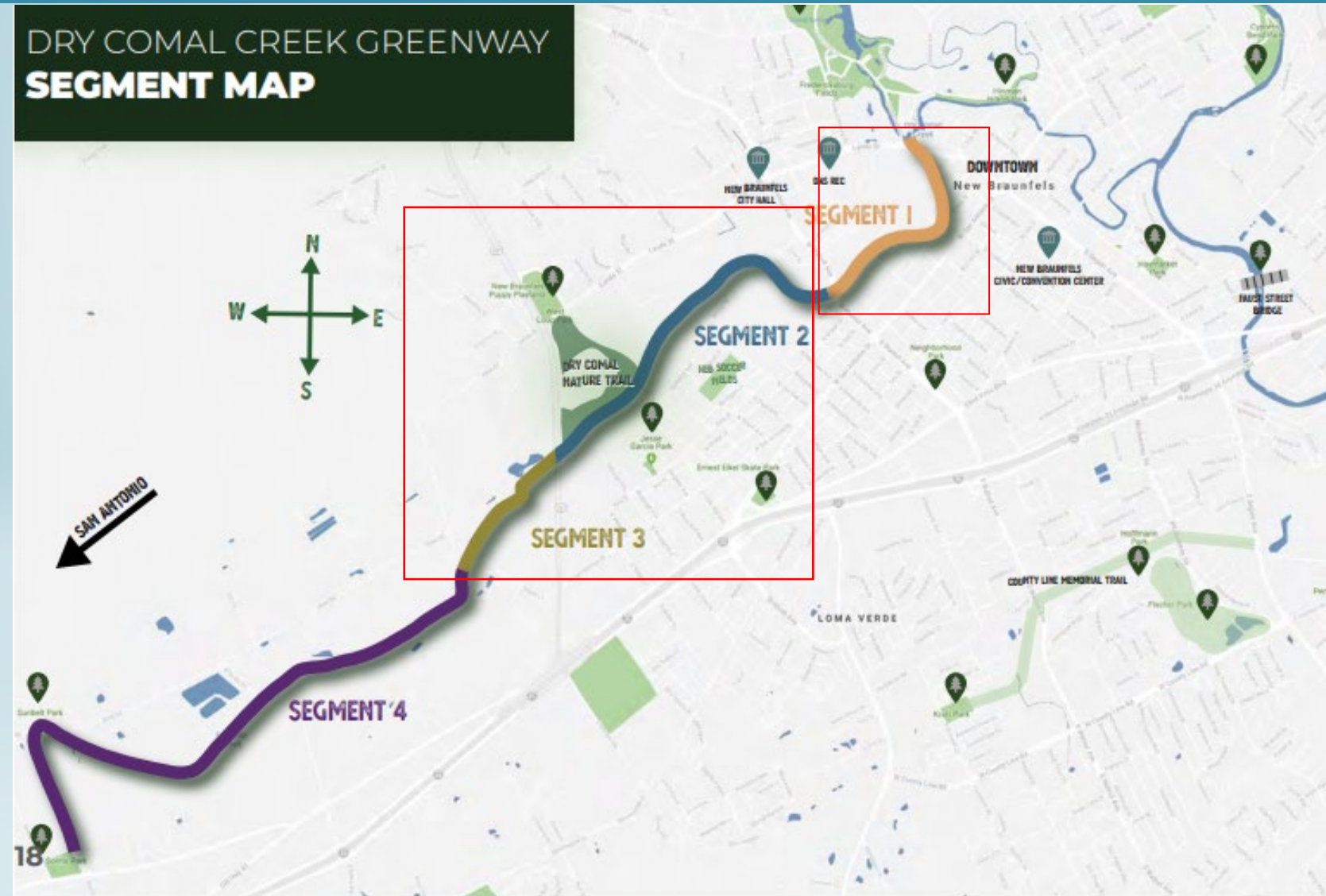


Fig. 3.1.1 Trail at Union Pacific Railroad bridge.



# FULL TRAIL PLAN

## DRY COMAL CREEK GREENWAY SEGMENT MAP



### Segment 1

- Final Design in Progress
- MPO grant funding has been awarded for construction-FY25

### Segment 2 & 3

- NBEDC recently approved funding to begin Feasibility study and conceptual design.

### Segment 4

- Future