

Better NB

Case Studies of City Initiatives
Making New Braunfels a
Better Community

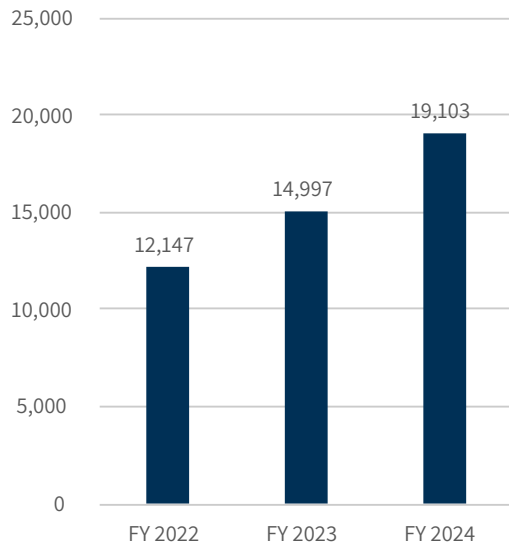
Drink, Drive, Go to Jail: NBPD's New DWI Unit Making New Braunfels Roads Safer



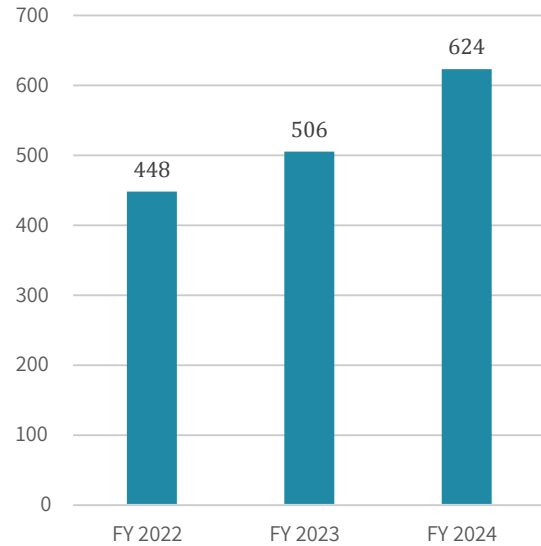
In just its first year, the City of New Braunfels Police Department's dedicated DWI Unit has had a significant impact in making New Braunfels streets safer. Formed in October of 2023 to reduce the number of impaired drivers and alcohol-related traffic accidents, the DWI Unit, which is part of the NBPD Traffic Unit, includes two dedicated officers whose sole purpose is to seek out intoxicated drivers and remove them from local roadways.

In the past 12 months, the DWI Unit has made 261 DWI arrests, making up approximately 42% of the 624 total DWI arrests made by the entire police department during that same time frame. Additionally, that same two-person DWI Unit is responsible for conducting 1,319 traffic stops during FY 2024 (October 1, 2023 – September 30, 2024). That averages out to more than 3.5 traffic stops every day of the year and makes up approximately 7% of all traffic stops made by NBPD in FY 2024.

Traffic Stops



DWI Arrests



"The early success of the DWI Unit has already begun to shift the dynamic on our city's roads, offering a new level of safety for everyone who lives in or visits New Braunfels," said Chief of Police Keith Lane. "By dedicating these officers to DWI enforcement, we've been able to make a real difference. We want people to make smart choices when it comes to drinking and driving. There are so many options available, like rideshare services and designated drivers, that there's no excuse for drinking and driving."



Unlike some specialized law enforcement programs that rely on grants or special funding, the DWI Unit is funded through the City's general fund, ensuring that it remains a core part of NBPD's mission. Those officers are not part of the regular Patrol Division, which allows them to remain dedicated to their primary task of identifying and removing intoxicated drivers from the road.

The officers on the DWI Unit also have specialized training in DWI detection and enforcement, Standard Field Sobriety Tests (SFST's), and breath test operations. One of the DWI Unit officers is Ofc. Terry Flugrath, a 30-year veteran of the New Braunfels Police Department who has made a name for himself over the years as the department's go-to DWI enforcement officer. Since 2010, Ofc. Flugrath has made over 1,700 DWI arrests and he has been awarded the Mothers Against Drunk Driving (MADD) Hero Award each year for the last 14 years for being the officer in the department with the most DWI arrests for that year.

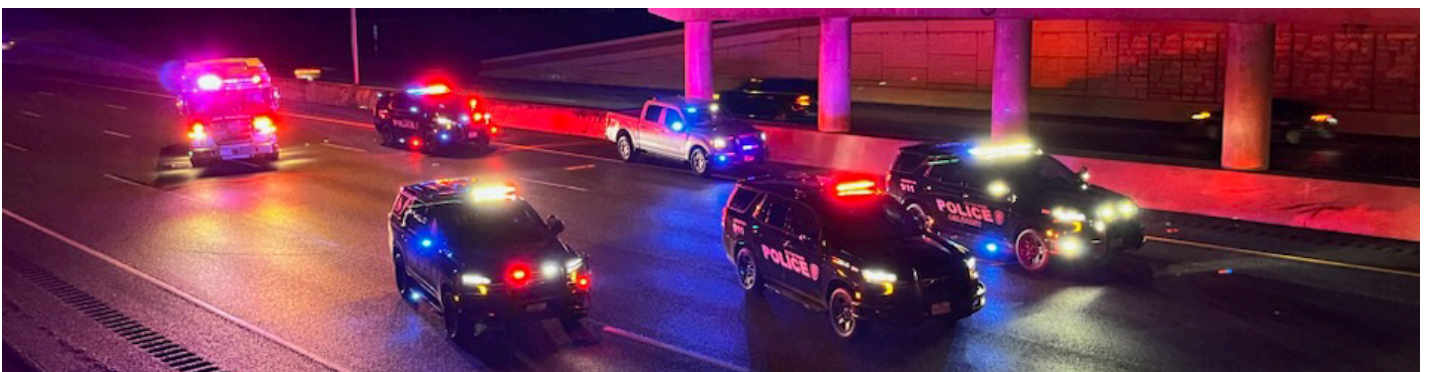
While the entire city is protected around the clock by the NBPd Patrol Division and its Traffic Unit, the DWI Unit is particularly active during evening and overnight hours when impaired driving tends to peak. Each night, at least one DWI officer is on duty, patrolling areas where impaired driving is most likely to occur. This specialized approach not only improves road safety but also eases the burden on regular patrol officers, who can now concentrate on other important community policing efforts.



Beyond the DWI Unit, NBPd officers can also elect to work extra duty shifts under the Selective Traffic Enforcement Program (STEP), a federally funded grant program administered by the Texas Department of Transportation (TxDOT). The STEP initiative provides funding for extra officers on local roads targeting speeders, drunk drivers, distracted drivers on cell phones, those not wearing seat belts, and drivers who ignore traffic signals at busy intersections.

2,168

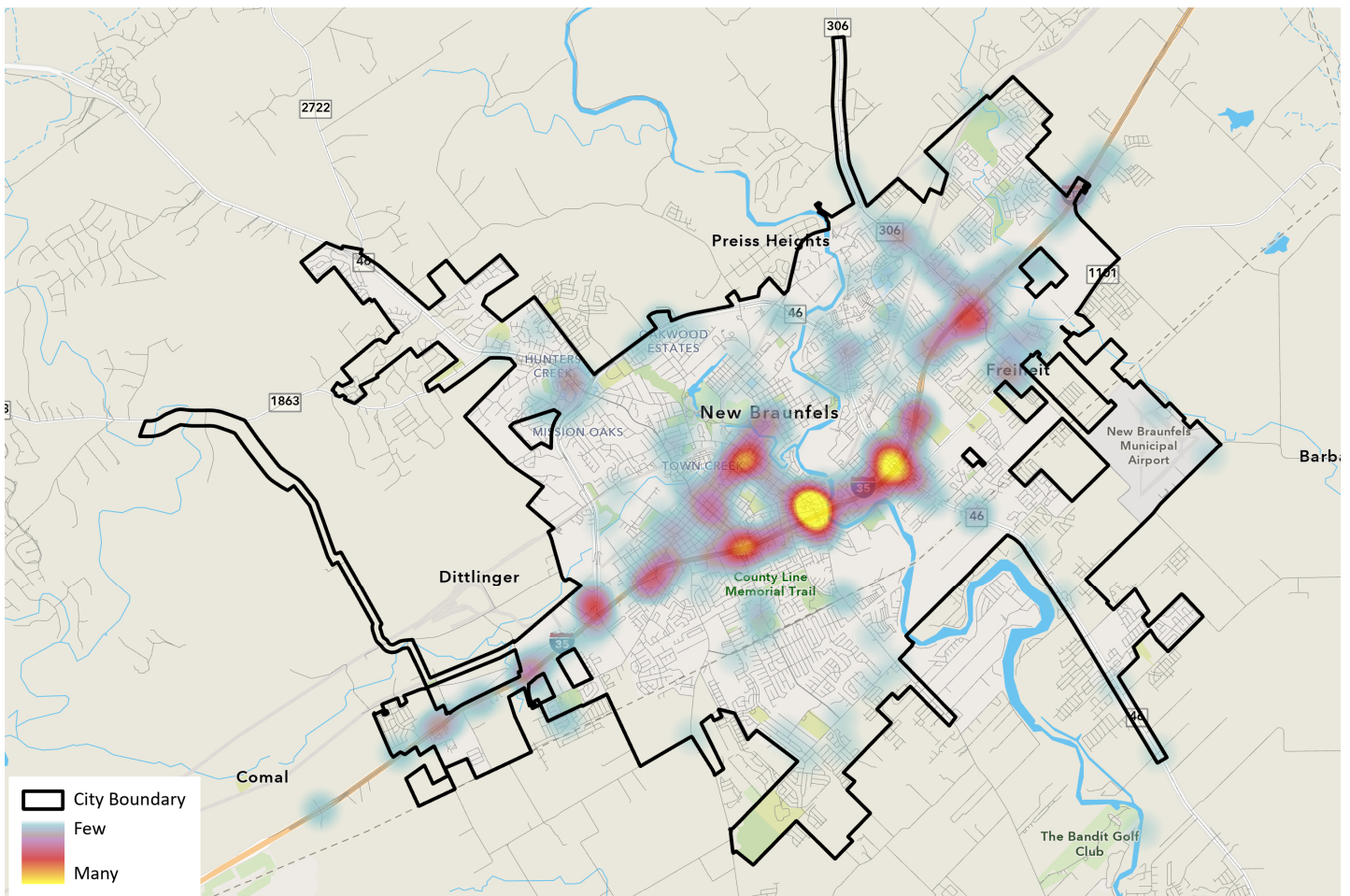
Patrol Hours Funded Through STEP Grant





"As we approach the festival and holiday season, with events like Wurstfest, Thanksgiving, and Christmas, drivers should be aware that NBPD will be focusing on taking drunk drivers off the roads," said Traffic Unit Sergeant Tim Brinkkoeter. "The holiday season is a time for celebration, but we want to remind everyone to celebrate responsibly. We'll have additional officers on the road, working to ensure everyone makes it home safely."

The DWI Unit will play a pivotal role in ramping up enforcement during this time, alongside the broader Traffic Unit. That includes increased patrols throughout the city, especially around festivals, nightlife hot spots, and along major highways like I-35, Hwy 46, and Loop 337. Although there is a focus on holidays and special events, drivers can expect to see increased patrols year-round as part of the department's commitment to preventing accidents, protecting lives, and keeping the roadways of New Braunfels safe for everyone.



DWI Arrests
10/1/23 - 9/30/24