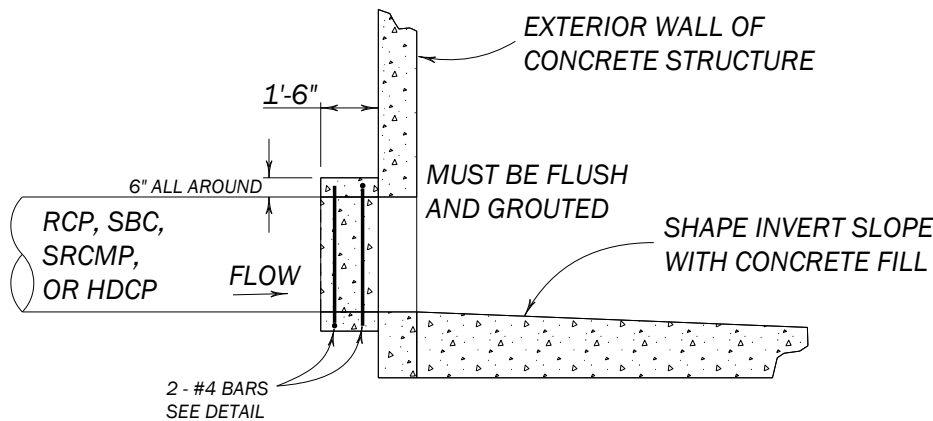
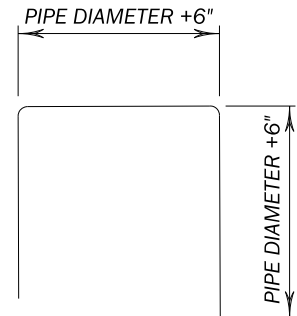
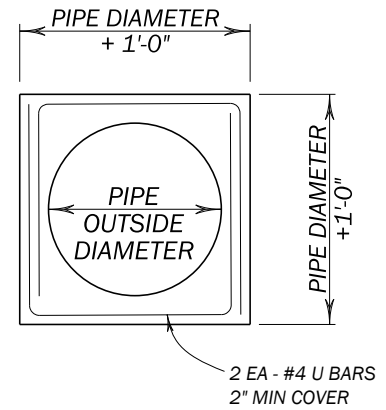
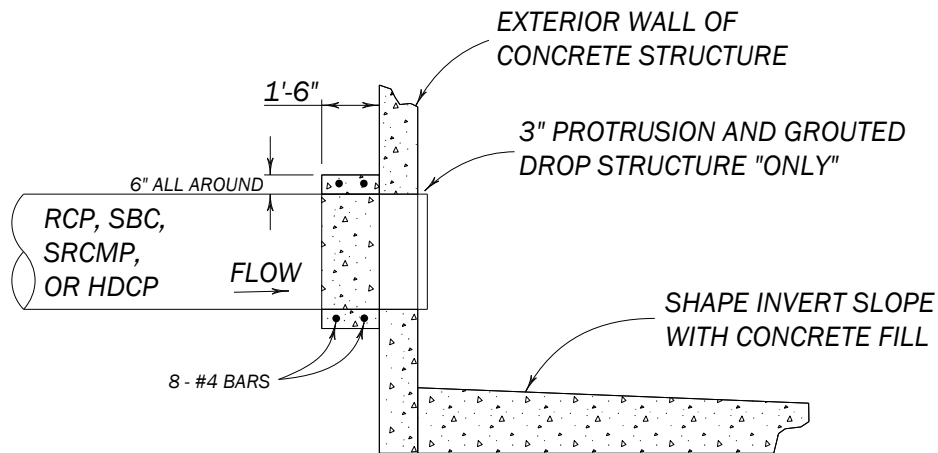


CONCRETE COLLAR NOTES:

- 1) CONCRETE FOR STRUCTURES SHALL BE CLASS "A", 3,000 P.S.I. AT 28 DAYS.
- 2) ALL EXPOSED EDGES SHALL BE CHAMFERED $\frac{3}{4}$ ".
- 3) REINFORCED STEEL SHALL BE NEW BILLET STEEL, INTERMEDIATE GRADE, ASTM, A-15, THE DEFORMATION SHALL CONFORM TO ASTM, A-305.
- 4) ALL DIMENSIONS RELATING TO REINFORCING STEEL ARE TO CENTER OF BARS.
- 5) ALL BARS INTERCEPTING MANHOLE OPENING AND REINFORCED CONCRETE PIPE SHALL BE FIELD CUT.
- 6) WHERE LAPPING OF BARS IS REQUIRED, A MINIMUM LAP OF 33 DIAMETERS SHALL BE USED.
- 7) INVERT OF JUNCTION BOX TO BE SHAPED WITH CONCRETE FILL (3,000 P.S.I. MIN.) TO EFFECT DRAINAGE TO OUTLET PIPE, COST SUBSIDIARY TO CLASS "A" CONCRETE (JUNCTION BOXES).



PIPE FLUSH WITH INVERT



DROP STRUCTURE